



January 31st, 2020
Issue 1, Week 1, Term 1

**CURIOSITY INCLUSION
OWNERSHIP PASSION**

WELCOME TO IRYMPLE SOUTH PRIMARY SCHOOL, 2020

A sincere welcome to all new and returning families. We are looking forward to another exciting, productive and successful year in 2020. This newsletter contains all the important information about our school. Please refer to it throughout the year. The fridge would be a great place to keep it!

STAFFING

Our current staffing is as follows:

Principal	Ms Robyn Brooks	(brooks.robyn.a@edumail.vic.gov.au)
Assistant Principal	Mr Ben Milsom	(milsom.ben.j@edumail.vic.gov.au)
Learning Specialist	Mr Jamie Russell	(russell.jamie.m@edumail.vic.gov.au)

Prep G	Mrs Eryn Gee	Room 5	(Gee.Eryn.B@edumail.vic.gov.au)
Prep M	Mrs Aleisha Milne	Room 6	(milne.aleisha.c@edumail.vic.gov.au)
	Mrs Stacey McDermott	Room 6	(mcdermott.stacey.l@edumail.vic.gov.au)
1T	Miss Monique Theunissen	Room 12	(theunissen.monique.c@edumail.vic.gov.au)
1M	Miss Sophie Milner	Room 13	(Milner.Sophie.L@edumail.vic.gov.au)
1C	Mrs Kate Cardew	Room 14	(cardew.kate.l@edumail.vic.gov.au)
2W	Mrs Tammy Warn	Room 15	(warn.tammy.l@edumail.vic.gov.au)
2R	Mrs Marie Roccisano	Room 16	(roccisano.marie.m@edumail.vic.gov.au)
2B	Mrs Karina Bozzi	Room 17	(Bozzi.Karina.L@edumail.vic.gov.au)
3V	Mrs Brooke Vadlja	Room 3	(vadlja.brooke.b@edumail.vic.gov.au)
3T	Mrs Katelyn Matthews	Room 4	(thompson.katelyn.m@edumail.vic.gov.au)
4R	Mr Jamie Russell	Room 1	(russell.jamie.m@edumail.vic.gov.au)
4C	Mrs Carmel Casale	Room 2	(casale.carmela.c@edumail.vic.gov.au)
5A	Mr Shannon Allen	Room 8	(allen.shannon.a@edumail.vic.gov.au)
5R	Miss Shanae Rose	Room 9	(Rose.Shanae.E@edumail.vic.gov.au)
6S	Mr Tim Smith	Room 10	(smith.tim.j@edumail.vic.gov.au)
6H	Miss Lauren Hepworth	Room 11	(hepworth.lauren.a@edumail.vic.gov.au)

Our part time teaching staff will provide a variety of support and specialist programs. Our specialist and support teachers in 2020 are:

Mrs Sharon Branson	P.E.	(branson.sharon.j@edumail.vic.gov.au)
Mrs Renee Giddings	Classroom Support	(giddings.renee.j@edumail.vic.gov.au)
Ms Sarah Gladman	4C (Friday) & Support	(gladman.sarah.j@edumail.vic.gov.au)
Mrs Maddy Hura	Classroom Support	(Hura.Maddy.M@edumail.vic.gov.au)
Mrs Emma Lord	Art	(lord.emma.l@edumail.vic.gov.au)
Mrs Nadine McWilliams	Music	(mcwilliams.nadine.n@edumail.vic.gov.au)
Mrs Donna Morffew	1C (Friday)	(morffew.donna.m@edumail.vic.gov.au)

Our Education Support staff for 2020 are:

Ms Sharon Welsh	Business Manager	(welsh.sharon.p@edumail.vic.gov.au)
Ms Penni Williams	Admin/Support	(williams.penni.m@edumail.vic.gov.au)
Mrs Kerri Retallick	Classroom Support	(retallick.kerri.e@edumail.vic.gov.au)
Ms Olivia Ferguson	Classroom Support	(Ferguson.Olivia.O@edumail.vic.gov.au)



Be Your Best

Office: 50245345

Postal Address: P.O. Box 716, Irymple South 3498

Email: irymplesouth.ps@edumail.vic.gov.au

Web: www.irymplesouthps.vic.edu.au



BYOD (Bring Your Own Device) UPDATE

In the first week of school, your child will have received 2 forms for signing.

1. BYOD Standards for Personal iPad Care – this needs to be signed by the parent and child if you are bringing your own iPad. As in previous years, students without their own device will not miss out on access to technology that is available.
2. Acceptable User Agreement – this needs to be signed by all students and parents as it is a commitment to using all technology at school in a safe and responsible way.



In 2020 we will be continuing our connection with MOSYLE School Manager as our management hub. This is the hub that distributes all the apps and allows our students safe access in a controlled environment.

Prep Parents – The Prep Teachers will be in direct communication regarding the connection to our MOSYLE Hub.

Grade 1-6 Parents – Each of the children should already be signed up from 2019. Classroom teachers will be managing this.

Student Leadership

Our School Captains for 2020 are;

Sydney Anderson
Tom Connelly
Colby Geister
Sam Tassone

Our House Captains for 2020 are;

Dewry **Meg Knight & Harper Milsom**
Campbell **Max Bell & Charlotte Hawson**
Newton **Jude Blundy & Charlie Puleio**
McCracken **Addison Bell & Liam Smith**

Captains Badges

At the conclusion of 2019 our captains were announced for the 2020 year. Congratulations to those 14 students who were awarded these positions. Badges will be presented at assembly on Monday 3rd February.

School Hours

9:00am	School Assembly (Mon & Fri)
9:00am – 11:00am	Session 1
11:00am – 11:30am	Recess
11:30am – 1:30pm	Session 2
1:20pm – 1:30pm	Lunch to be eaten in classrooms
1:30pm – 2:15pm	Lunch break
2:15pm – 3:15pm	Session 3
3.10pm	Bell for bus travellers
3.15pm	Dismissal

Attendance

Regular school attendance is vital for your child's progress. All children need to attend school daily. The school teaching program starts promptly at **9:00am**, so we suggest that you make sure your child arrives before this time to get themselves organised and have a chat with

their friends. School finishes at 3:15pm, with bus travellers getting on their bus at 3:10pm. Please schedule any non-essential appointments outside these hours. We recommend that students are at school by 8:40am.

Late Arrivals & Early Departures

All parents / guardians must come via the office if they are dropping their child off after 9:00am, or if they are picking their child up before 3.15pm. There is an iPad to sign students both in and out of school.

Absences

If your child is absent it is a requirement that a parent or guardian informs the school via email to the classroom teacher, message on SeeSaw or a phone call. If your child will be absent for an extended period please inform the class teacher or school before they leave.

Assembly

Each Monday and Friday whole school assemblies are held. Each week a different class is responsible for running the assembly. The national anthem is sung on Monday's assembly. Birthdays are celebrated on both days. 'Students of the Week' are presented with their certificates on Monday morning. Parents are welcome to stay and attend assembly.

Students of the Week

Teachers recognise children who have made a special effort in class during the week by awarding them a 'Student of the Week' certificate. Each class teacher, specialist teacher and the principal give out an award each week. The 'Students of the Week' are announced in Friday's newsletter and awards are given out at Monday's assembly.

Specialist Programs

In 2020 we will have specialist programs, usually one hour per week, with specialist teachers in Visual Arts, P.E. and Music. The specialist programs provide students with the opportunity to explore and participate in creative and physical activities.

Lunchtime Programs

During lunchtime we provide both passive and active activities for all age groups throughout the year. These activities are run by staff and Grade 6 student leaders. Activities occur both inside and outside. The activities change each term and have included skipping, board games, Lego club, football and netball.

Houses

Each child is placed in a House when they are enrolled. Siblings are placed in the same house. The students compete in the Cross Country and Athletic Sports in their House. Our houses are;

MCCRACKEN
NEWTON
CAMPBELL
DEWRY

Newsletter

The newsletter is published weekly and distributed electronically on Friday through an email via Xuno. The newsletter provides all the information about our school and it is a vital point of call if you need to know anything. The newsletter is also uploaded to the website and a link posted on Facebook.

Social Media

The school community is kept up to date via Facebook. Our Facebook page is constantly updated and will have messages and alerts that are relevant at the time.

The website has links to our school policies, PDF copies of the newsletter and a list of upcoming events. www.irymplesouthps.vic.edu.au

Water Bottles

All children need to have a water bottle to use in the classroom and for outdoor lessons. Please don't freeze drink bottles or put cordial in them.

Healthy Lunch

It is important that children have healthy lunches and snacks at school. We encourage 'rubbish free' lunches to minimise the rubbish in our yard, promote sustainable practices and the waste of resources that are used to wrap food items. By using plastic containers you can help reduce the amount of rubbish brought to school.

Eating of Snack and Lunch

Snack is eaten in the assembly area from 11:00 to 11:05am. This allows the students time to eat. Lunch is eaten inside between 1:20 and 1:30 pm. If a student has not completed eating their lunch they take their lunch outside and eat in the assembly area.

Lunch Orders

The Irymple General Store will be supplying the school's lunch orders again this year. Lunch order days will be **WEDNESDAY** and **FRIDAY**.

All lunch orders are to be written on a paper bag

- ☺ Name, room number and grade must be written on lunch bags
- ☺ Correct money must be included in the bag, no change will be given
- ☺ Lunch orders to be placed in basket in classroom before 9am
- ☺ NO LATE ORDERS WILL BE ACCEPTED

Parent Payment 2020

School Council have approved the Parent Payment Policy for ISPS. Fees for 2020 will be;

- Prep-5 \$225
- Grade 6 \$275 (which includes Leadership Program)
- ICT Levy \$75 (optional)

All families are asked to make their payment in full by the end of first term. Family fee statements were sent home yesterday.

Payment plans are available by direct depositing money into the following account with your child's name as the reference;

BSB: 063 520

Acc: 10104523

Camps Sports & Excursions Fund (CSEF) 2020

The Victorian Government will be providing a CSEF payment to all eligible families to assist with the costs of school trips, camps and sporting activities. Please contact the office to get an application form. The School will need to sight and copy the concession card to ensure that the parent's name and Centrelink Reference Number (CRN) matches the Centrelink database. Applications close on Friday 26th June, 2020.

Medication

If your child requires medication whilst they are at school, the medication needs to be taken to the office by the parent or guardian. The school can only administer medication if we receive it from an adult. Dosage and times need to be clearly labelled on the medication. Children should not have medication in their bag.

Medical Action Plan

If your child suffers from asthma, anaphylaxis or allergy, we require an action plan that has been filled in and signed by your doctor. This needs to be brought to the school office before the start of the school year. Medical alerts are communicated with all staff and we take these very seriously.

Calico Bags

Each student will be receiving a calico money bag at the start of the year. We will use the calico bag instead of envelopes and plastic money bags as they are environmentally friendly. Each year the calico bags will be reused.

We hope that you find the calico bags useful. It would be a great idea to always keep the calico bag in the front section of your child's school bag.

Extreme Weather

An extreme weather timetable will be enforced when the predicted temperature is 38°C or above. This decision will be made by the Principal or Assistant Principal.

If the day is declared an extreme weather day the following will occur;

- Children will go outside as normal at recess
- Lunches will be eaten inside during the usual class time (1:20pm – 1:30pm)
- Children be able to go outside from 1:30pm – 1:50pm
- Children will have to remain under the sail shades during their time outside
- Children will remain in their classrooms for the remaining 25 minutes
- Children will undertake quiet activities in their classrooms
- Children will be reminded to drink water regularly during the day

Prep Rest Days

We welcome all of our very excited and enthusiastic Preps. The Preps will not be attending school on Wednesday during February. This will give them a chance to rest. The Preps first full week of school will commence on Monday 2nd March.

Parking

Please park safely at all times and follow the signs regarding parking in Belar Avenue and 15th Street. Please observe speed signs at all times and observe the crossing area rules. Ensure that you don't park where the buses park and leave plenty of room around the crossing.

Parental Involvement

We value and promote parental involvement in our school through a variety of different

forums. Our newsletter is a vital medium for advising parents of the workings of the school, upcoming events and for opportunities to offer your assistance.

After School Care

Stepping Stones Children's Services run an After School Care Program every afternoon from 3:15pm to 6:00pm each day at Irymple Primary School. If you require a place in the After School Care program please contact; Stepping Stones Children's Services Person in Charge - Outside School Hours Care
PH: 1300665699

Communication with the school

We value open lines of communication between home and school. If you have any issues, concerns or queries about your child, please do not hesitate to contact his/her teacher via Xuno or email. Feel free to pop in and make a time to discuss any matter.

Bus

The bus fare is \$1.20. If possible, please provide exact money if your child catches the bus. If you are considering using the bus to get to school, visit the Buslink website (<http://buslink.com.au/your-bus-service/mildura/>) scroll down to the section 'Getting to and from school', select Irymple South Primary school and view the routes and times of the buses to and from school.

Information Updates

Please keep us informed about any changes to phone numbers, emergency contacts and addresses. If any details change please email these to Penni Williams so that they can be updated.

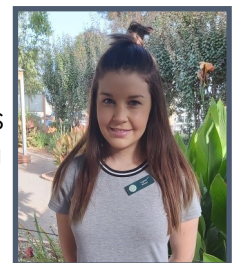
williams.penni.m@edumail.vic.gov.au

School Photos

School Photos will be taken on *Tuesday 25th February*. Order forms will be sent home next week. There is an option for Family photos as well.

Welcome to Staff

This year we welcome Miss Sophie Milner to our school. This is Sophie's first year of teaching and we hope that she has a wonderful start to her career.



Mrs Maddy Hura and Mrs Donna Morffew have returned after taking maternity leave. We hope that they enjoy their return to work.

Congratulations

At the end of January, Mrs Bonnie Lando welcomed a baby girl to the world. Congratulations to Bonnie and Carmelo on the birth of Florence. We hope that you are

enjoying life as parents.

House Sports Shirts

If you would like to order a House Shirt for this year, now is the time to do it!

Please note these **can not be bought off the shelf in the store, they are purely an online order.**

Orders can be placed until Thursday March 5th.

Once again, please be aware that these are **online orders only** and are the same sizing as



the school polo shirts.

Building Works

Over the holidays improvements were made to our school.

New refrigerated bubble taps have been installed outside the Prep and Grade 3 rooms. Painting was completed in the classrooms.

School Concert Video

Last year's school concert video is still available to view and download at your leisure.

Visit this link directly.

<https://vimeo.com/375831581>

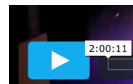
Enter this password: **ISPS3702**

The video will be available to view and download for one year.

To view it, click on this triangle, at bottom left of the video view

↓ Download

To download it, scroll down a little and click on



Coronavirus

The Department of Education and Training has published a 'Fact Sheet' about the virus, its symptoms and when isolation from school is required. This fact sheet is included in the Newsletter. If you travelled to China during the holidays (in particular the Hubei province)



Welcome back everyone!



Introducing our 2020 Preps



ISPS UNIFORM

Our school uniform is available from Laser Signs and Print. They are located at 3A Andriske Court Mildura. The shop will also be open on the first Saturday of each month from 9:00am –12:00pm. Uniforms can be purchased online. Follow the directions below:

- www.lasersp.com.au
- Online Store
- Schools
- Irymple South Primary

Our uniform consists of;

Boys

- Shoes: black and enclosed –must be safe and supportive for active play
- Socks: grey or white
- Bottoms: grey school shorts or long pants (eg. cargo pants)
- Shirt: grey/green short sleeved polo, grey/green long sleeved polo
- Jumper: green polar fleece
- Jacket: green spray jacket

Girls

- Shoes: black and enclosed –must be safe and supportive for active play
- Socks: grey or white
- Bottoms: grey pants, grey school shorts or skorts with grey tights
- Shirt: grey/green short sleeved polo, grey/green long sleeved polo
- Dress: grey checked cotton dress
- Jumper: green polar fleece
- Jacket: green spray jacket
- Hair accessories: must be green in colour (eg. green ribbon)

Hat

- Bucket hat (in accordance with ISPS Sun-Smart policy)

School Bag

- Green with printed school logo

Art Smock

- Used in Art to protect clothing

It is expected that all students make every effort to wear full school uniform every day.

House Shirts

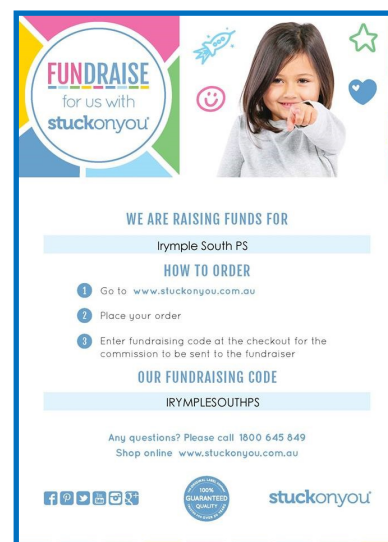
House shirts can be worn on whole school sports days and on other days nominated throughout the year. House shirts can only be ordered at specific times throughout the year. Our current order closes on Thursday 5th March.

Hats

All children are required to wear school bucket hats in the school yard at all times from September 1st through to April 30th. If a student does not have a hat they must sit under the shade outside their class door or sit in the Assembly Area. Our school actively supports Sunsmart policies. School hats are available to purchase at the office.

Stuck on You Labels

Please ensure that you name all items that come to school. We receive 20% from all sales of 'Stuck on You' labels. Use the code IRYMPLESOUTHPS at checkout.



The poster features a young girl smiling and pointing at the camera. The text on the poster includes: 'FUNDRAISE for us with stuckonyou', 'WE ARE RAISING FUNDS FOR Irymple South PS', 'HOW TO ORDER' with three steps: 1. Go to www.stuckonyou.com.au, 2. Place your order, 3. Enter fundraising code at the checkout for the commission to be sent to the fundraiser. It also lists 'OUR FUNDRAISING CODE IRYMPLESOUTHPS', contact information 'Any questions? Please call 1800 645 849 Shop online www.stuckonyou.com.au', and social media icons for Facebook, Twitter, Instagram, and YouTube. A '100% GUARANTEED QUALITY' seal and the 'stuckonyou' logo are also present.

Happy Birthday

JANUARY

Macey Currie (1st)
Kobie Parker (3rd)
Pippa Anderson (3rd)
Nardia Sirgunas (4th)
Cassie Van Schaik (4th)
Max Mannes (5th)
Ahvius Johnson (6th)
Elektra Zagar (6th)
Orlando Memery (10th)
Jamie Russell (11th)
Israel Milne (13th)
Joel Garlick (13th)
Ivanna Pardo (14th)
Anthony Warne (15th)
Sebastain Topp (16th)

Xavier Topp (16th)
Jimmy Milsom (17th)
Harper Milsom (18th)
Evie Piscioneri (19th)
Kate Cardew (22nd)
Kylah Sutton (23rd)
Chase Russell (23rd)
Emily Hocking (25th)
Freya Livingston (26th)
Kerri Retallick (27th)
Winnie Anderson (29th)
Levi Geister (29th)
Bronte Dayman (29th)
Noah Carn (30th)
Lara McKinley (30th)
Luis Thornton (30th)

Monique Theunissen (31st)

FEBRUARY

Mietta Madigan (1st)



2020 Annual Junior Tennis Tournament

Singles – Saturday 8th
February

Doubles – Sunday 9th
February

\$10 per entry per player

9am start each day

Entries or Enquiries to:

Tena Williams on

Ph: 0437 809206 or

Email –

tenajoy@bigpond.com



ELECTRIC LIGHT THEATRE
2020 PRESENTS

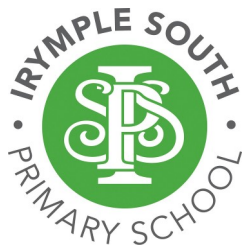
IT'S TIME TO
SHINE

7.30pm Fri 7th Feb - 2.00pm Sat 8th Feb
7.30pm Sat 8th Feb - 2.00pm Sun 9th Feb

TICKETS AVAILABLE ONLINE AND AT MAC THEATRE
WWW.MILDURAARTSCENTRE.COM.AU
ENQUIRIES: (03) 5018 8330 WWW.ELTMILDURA.ORG

Entertainment For All Ages!

SHOWCASING THE BEST UP AND COMING YOUNG TALENT



Irymple South Primary School

Parent Payment Policy

The Education and Training Reform Act (2006) provides free instruction in the standard curriculum program to all students in Government schools. The Act also empowers school councils to charge fees to parents for goods and services provided by the school to a child.

Free instruction is the teaching staff, administration and the provision of facilities in connection with the construction of the standard curriculum program, including reasonable adjustments for students with disabilities.

Parent contribution, in all forms, assists Irymple South PS to provide an enriched learning and teaching program for every student and is highly valued by our school community. The commitment from parents to contribute benefits students and results in improved achievement outcomes, wellbeing and engagement in learning. At Irymple South, we design and develop learning and teaching programs drawing on the best educational knowledge and practices and strive to offer broad and enriched opportunities to students that are beyond what is required in the standard curriculum.

ISPS ensures that parent payment practices are consistent, transparent and ensure that all children have access to the standard curriculum.

Payment is requested in the following categories:

Essential student learning Items:

The items, activities or services that are essential to student learning of the standard curriculum at Irymple South PS are as follows:

A4 or A3 Whiteboard, Whiteboard markers, exercise books, scrap books, plastic storage folders, plastic pocket books, pencils, pens, markers, coloured pencils, erasers, sharpeners, scissors, rulers, tape & staplers, photocopy paper, Art materials, Cooking materials, Science materials,

Incursions as part of the curriculum or year level,

Excursions as part of the curriculum or year level,

Apps for iPad, headphones

Book bag, Calico Money bag, Diaries, Book Boxes

All of the items in the essential payment list have been sourced from multiple suppliers at the most cost effective rate to ensure minimal cost to families.

Parent Payment Charges for Essential Learning Items for 2020: \$225 per child

This fee of \$225 will cover all aspects of education with the exclusion of the camp program, the BYOD iPad program and donations that families may choose to make.

Optional Items:

These items, activities or services are optional and additional to the standard curriculum.

ICT levy

ICT levy for students not opting into BYOD program: \$75

Voluntary Financial Contributions:

Parents are invited to make a voluntary contribution to support our ground/building priorities in 2020.

Payment Arrangements and Methods

The following payment methods are available:

1. Cash or cheque
2. Direct Deposit : Irymple South Primary School
BSB: 063520 (Commonwealth Bank)
Acc No: 10104523 (please use your child's surname as reference)
3. EFTPOS – available at the front office

The following Payment Arrangements are available:

1. Pay in full by March 27th 2020
2. Payments may be paid in instalments (weekly, fortnightly or monthly) beginning at the start of the year
3. Table of charges is outlined in the newsletter in the last 6 weeks of the year
4. Invoices cannot be generated more than monthly (excluding health card recipients)

If paying in online instalments please ensure your child's surname is included in the reference line.

Sharon Welsh, Business Manager can be contacted at the school to discuss and arrange payment options.

Family Support Options

The principal and school council exercise sensitivity to the differing financial circumstances of students and their families when considering parent payment fees and the 1:1 program.

Support for families experiencing financial difficulty can be accessed through:

The **Camps, Sports and Excursion** fund provides payments for eligible students to attend camps, sports and excursions.

Families holding a valid means-tested concession card or temporary foster parents are eligible to apply and a Special Consideration eligibility category exists.

State Schools' Relief may cover the cost of new uniforms, shoes, books and more for disadvantaged students. Parents or Carers must make an appointment with the principal to discuss as requests can only be made from principals, assistant-principals or welfare workers.

Consideration to families experiencing financial hardship regarding payment arrangements can be discussed with the principal, Robyn Brooks. Please contact the school on 50 245345, to make a time to discuss payment arrangements, email Robyn at brooks.robyn.a@edumail.vic.gov.au or make a time to meet personally.

Communicating with Parents

This policy, including the Understanding Parent Payment Categories flyer will be communicated through the school newsletter, the school website at least 6 weeks before the end of the previous school year. Parents are encouraged to raise issues, make general inquiries about charges and contact the principal if there are any concerns or complaints.

Monitoring and Review of the Implementation of the Policy

It is the responsibility of the school council to monitor the implementation of the policy, identify the factors/measures to be taken into account, such as transparency of processes and engagement with parents and how/when it is reported back to the school community, and timing and processes of review.

Date and approval by School Council: September 20th 2019
This policy will be reviewed: Term 3, 2020.


Understanding Parent Payment Categories

Schools
What does the legislation say?

The Education and Training Reform Act (2006) provides for free instruction in the standard curriculum program to all students in government schools. The Act also empowers school councils to charge fees to parents for goods and services provided by the school to a child.

In the Act, a 'Parent' includes a guardian and every person who has parental responsibility for a child including parental responsibility under the Commonwealth Family Law Act 1975 and any person with whom a child normally or regularly resides.

What do schools pay for as part of 'free instruction'?



Free instruction is the teaching staff, administration and the provision of facilities in connection with the instruction of the standard curriculum program, including reasonable adjustments for students with disabilities.

The standard curriculum for Years F-10 means implementation of the Victorian Curriculum F-10.

The standard curriculum for senior secondary schools means a program that enables a student to be awarded a VCE or VCAL qualification.

What principles govern parent payment practice?

Educational Value | Access, Equity & Inclusion | Affordability
 Engagement & Support | Respect & Confidentiality | Transparency & Accountability

Parents
What may parents be asked to pay for?

Schools can request payment for
Essential Student Learning Items

These are items, activities or services that the school deems **essential** to student learning of the standard curriculum.

Where practical and appropriate, parents may choose to purchase items through the school or provide their own.

These may also be either:

Items the student takes temporary or permanent possession of

e.g.

- textbooks, activity books, exercise books
- stationery, book bags
- student ID cards, locks
- cooking ingredients students will consume
- materials for final products that students take home (technology projects, build-your-own kits, dioramas)
- Picture Exchange Communication Systems

Activities associated with instruction that all students are expected to attend

i.e. travel, entry fees or accommodation

e.g.

- excursions
- incursions
- school sports
- work placements

Schools can request payment for
Optional Items

These are items, activities or services that are **optional** and are offered in addition to the standard curriculum.

Students may access these on a user-pays basis.

These may be either:

Items the student purchases or hires

e.g.

- school magazines, class photos
- functions, formals, graduation dinners
- materials for extra curricular programs
- student accident insurance

Activities the student purchases

e.g.


- fees for extra curricular programs or activities, such as instrumental music tuition
- fees for guest speakers
- camps, excursions, incursions, sports
- entry fees for school run performances

Items and/or materials that are more expensive than required to meet the standard curriculum

e.g.


- use of silver in metal work instead of copper
- supplementary exam revision guides

Schools can invite
Voluntary Financial Contributions for



e.g.

- Building or Library fund (Tax deductible)
- Voluntary contributions for a specific purpose, such as equipment, materials, services.
- General voluntary contributions



Parents can be asked to pay for items, activities and services in the three Parent Payment Categories:

Essential Student Learning Items, Optional Items and Voluntary Financial Contributions.

Schools determine how items, activities and services are classified within these categories based on the learning and teaching program of their school.

Support for families experiencing hardship is available at every school and each school has a parent payment contact person. See your school's policy for more information.

For more information on Parent Payments and Personal Devices, visit the DET website at: www.education.vic.gov.au

Novel coronavirus (2019-nCoV)

Factsheet for schools and early learning centres

Last updated 29 January 2020

An outbreak of novel coronavirus (2019-nCoV) was detected in Wuhan, China in late December 2019. Cases have been reported predominantly in the city of Wuhan, in the Hubei province of China, as well as some other Chinese cities and countries, including two confirmed cases in Victoria, Australia.

What is this virus?

Coronaviruses can make humans and animals sick. Some coronaviruses can cause illness similar to the common cold and others can cause more serious diseases, including Severe Acute Respiratory Syndrome (SARS) and Middle East Respiratory Syndrome (MERS).

The virus seen in Hubei Province, China is called 'novel' because it is new. It has not been detected before this outbreak. Most people infected live in, or travelled to, Hubei Province, China. There have been cases of 2019-nCoV reported in other Chinese provinces and other countries. It is likely that the virus originally came from an animal, and there is now evidence that it can spread from person-to-person.

What are the symptoms?

Symptoms can include fever, cough, sore throat, or shortness of breath. Symptoms can take up to 14 days to develop.

What if I have a student or staff member who has been to Hubei province, China in the last 14 days?

All students and staff members who have travelled to Hubei Province, China, are advised to stay at home and avoid public settings, including attendance at schools and early learning centres, until 14 days after last being in Hubei Province, China.

Children and staff who are well and have travelled to other provinces in China, or any other areas where there have been reported cases, are NOT recommended to be excluded from schools and child care services unless the following applies:

- The person is a confirmed case of novel coronavirus
 - The person is a close contact with a confirmed case of novel coronavirus in the past 14 days
- If you think a child, student or staff member may meet one of the above criteria please call the Department of Health and Human Services (DHHS) to discuss further actions on 1300 651 160.

What if I have a student or staff member who is sick within 14 days of being in Hubei Province, China or another part of China?

If the student or staff member has a cough, sore throat, or shortness of breath:

- The student or staff member will need to be urgently excluded from school and be reviewed by a doctor.
 - Where necessary, call the student's parents or guardian to inform them of the need to exclude the child for urgent medical review.
 - If the school is arranging transport for a child/staff member to a medical facility, call ahead to advise that there has been travel to China, and whether this included travel to Hubei Province.
- If the student or staff member has severe symptoms, such as shortness of breath:
- Call 000 and request an ambulance, and

- Advise the paramedics that there has been travel to China, and whether this included travel to Hubei Province.

How can we help prevent the spread of 2019-nCoV?

Practising good hand and sneeze/cough hygiene is the best defence.

Encourage all students and staff to:

- wash hands often with soap and water
- cough and sneeze into your elbow

Where can I get more information?

For Victorian updates to the current incident, go to: <https://www.dhhs.vic.gov.au/novel-coronavirus>.

For national updates: <https://www.health.gov.au/news/latest-information-about-novel-coronavirus>

For international updates: <https://www.who.int/westernpacific/emergencies/novel-coronavirus>.

WHO resources <https://www.who.int/health-topics/coronavirus>

Authorised and published by the Victorian Government, 1 Treasury Place, Melbourne.

© State of Victoria, Department of Health and Human Services, January 2020.



Our Mission
 To be the most responsive provider of high quality child care and Outside School Hours Care in regional Australia

For more information or to receive an enrolment pack please:
 contact Stepping Stones Head Office
 on 1300 665 699
 or via email
 tarryn@sharingthecare.com.au



Irymple After School & Vacation Care



Stepping Stones
 Children's Services
"we're sharing the care"

Phone: 1300 665 699

Welcome

Stepping Stones Children's Services extends a warm welcome to all children, parents and extended family members.

At Stepping Stones we aim to work alongside families, as we share the care of children.

With many families working, we see it as a privilege to help families balance their commitments as we work with your children.

Many children will have long days at school, and with us at the beginning and end of each one, we aim to support children, by providing them with a safe, secure and happy environment in which to grow.

We believe that our school aged children should be able to do as much or as little as they like—after all, every day at school is different and having a familiar space and welcoming staff makes that extra time at school fun and rewarding.

Our staff all hold Working with Children Checks, current First Aid, CPR, Anaphylaxis and EAM.



Our Philosophy

'Every Child is a unique and precious gift'

Children

We believe that the individual child is the central focus to everything we do.

We value and respect the rights and unique qualities of each child.

The essence of childhood is play.

We value the importance of middle childhood.

Staff

Our vision of a caring staff member is one who remembers what it is to be a child, respects the diverse values of each child and will willingly join the children on their journey of learning and discovery.

Environment

We believe in providing a safe and secure environment that allows children to be free to discover, explore and express themselves.

Our environment stimulates all of the senses creating momentum for exploration, freedom of expression and discovery of self.

Family Partnership

We value the role of the family as the most important influence in a child's life.

We believe in working in a cooperative spirit with families to enable each child to developmentally reach their full potential.

We value the contribution families make towards the vision and direction of our service.

Community

We reflect the community in which we live and place value on positive partnerships that will enhance the lives of children.

Fees

Child Care Subsidy (CCS) is available to most families and is paid towards your fees by Centrelink. We can help guide you through the process.

Our full fees prior to CCS being applied are:

Permanent Bookings

After School Care \$30.25

Vacation Care \$67.15

Vacation Excursion \$79.95

Casual Bookings

After School Care \$36.20

Vacation Care \$80.20

Vacation Excursion \$95.55

After School Care 3:30pm–6:00pm

Vacation Care 8.00am–6.00pm

Please Note: Vacation Care is held at Mildura Central Primary School.



FINANCIAL ASSISTANCE INFORMATION FOR PARENTS

Every Victorian child should have access to the world of learning opportunities that exist beyond the classroom. The Camps, Sports and Excursions Fund helps ensure that no student will miss out on the opportunity to join their classmates for important, educational and fun activities. It is part of making Victoria the Education State and the Government's commitment to breaking the link between a student's background and their outcomes.

CAMPS, SPORTS & EXCURSIONS FUND (CSEF)

School camps provide children with inspiring experiences in the great outdoors, excursions encourage a deeper understanding of how the world works and sports teach teamwork, discipline and leadership. All are part of a healthy curriculum.

CSEF is provided by the Victorian Government to assist eligible families to cover the costs of school trips, camps and sporting activities.

If you hold a valid means-tested concession card or are a temporary foster parent, you may be eligible for CSEF. A special consideration category also exists for asylum seeker and refugee families. The allowance is paid to the school to use towards expenses relating to camps, excursions or sporting activities for the benefit of your child.

The annual CSEF amount per student is:

- \$125 for primary school students
- \$225 for secondary school students

MORE INFORMATION

For more information about the CSEF visit www.education.vic.gov.au/csef

Applications close of Friday 26th June

HOW TO APPLY

New applicants should contact the school office to obtain a CSEF application form or download from www.education.vic.gov.au/csef

If you applied for the CSEF at your child's school in 2019, you do not need to complete an application form in 2020 unless there has been a change in your family circumstances.

You only need to complete an application form if any of the following changes have occurred:

- **new student enrolments;** your child has started or changed schools in 2020 or you did not apply in 2019.
- **changed family circumstances;** such as a change of custody, change of name, concession card number, or new siblings commencing at the school in 2020.

Check with the school office if you are unsure.





Buslink Sunraysia Pty Ltd | Phone: 45 9094 3167 474
B-10 Bardsmead Cres, Mildura, VIC 3490 | PO Box 7931, Mildura, VIC 3490
08 5062 0276 | info.sunraysia@buslink.com.au
buslink.com.au

SCHOOL BUS SAFETY CODE OF CONDUCT

AN IMPORTANT MESSAGE ABOUT TRAVEL CONDITIONS FOR STUDENTS

December 2019

Dear parents and/or guardians,

Buslink Sunraysia wish to provide information regarding your child's 2020 school bus travel.

BUS ROUTES:

There have been some slight changes to some bus routes.

You can visit our website <http://buslink.com.au/your-bus-service/mildura/> scroll down to the "Getting to and from school" drop down menu and source the travelling requirements from there for time and pick up location / drop off points or to see if your child's bus service has had any changes. These are also in printable format. Please feel free to contact our friendly office staff for further information if you require.

If you need to source a bus route for your child travelling to a new school in the 2020 year, please do not leave this until the last minute. The office staff are available to speak with you throughout the holiday period other than the public holidays.

Please note that timetables show approximate times only and passengers should be at bus stops **AT LEAST 5 MINUTES BEFORE** published departure times.

TERM OR YEARLY BUS PASSES:

If you do not wish to provide cash for a daily or weekly ticket, you can obtain a Term or Yearly bus pass from the Buslink Sunraysia office. This type of pass is a pre-paid travel pass and the concession fare applies to students 16 and under.

You will need to provide a passport sized photo of your child and cheque, eftpos or cash payments are accepted.

Currently Public Transport Victoria has not released the 2020 fares however, to give an indication of the 2019 term fares:

- Term 1: \$105.60 – 9 weeks, 2 days
 - Term 2: \$105.60 – 9 weeks, 2 days
 - Term 3: \$112.00 – 10 weeks
 - Term 4: \$121.60 – 10 weeks, 4 days
- NB: these fares are the 2019 fares.

The 2020 fares may rise. Please phone the Buslink office in early January to obtain the new fares and fees of the pass.

If you decide this type of pass is the best option for you, it would be appreciated if you can organise it with the Buslink office staff during the school holiday period.

If your child loses the pass, it is a \$10.00 replacement fee to Buslink Sunraysia.

Those that require a Term or Yearly pass reissued, a new passport photo is required.

The student in your care has been allocated a seat on a school bus. Your co-operation would be greatly appreciated to ensure that he/she is at the designated bus stop at least 5 minutes before the stated arrival time of the bus, and is aware of the conduct expected on and around the bus.

As the parent/primary carer of the student, you are reminded of the following matters:

- School bus services are provided to ensure that students arrive at school safely and in sufficient time to prepare for school instruction. To ensure this objective is achieved it is the student's parent/carer's responsibility to see that students are not late for the bus.
- If waiting for a student, wait on the same side of the road as the bus stop, to eliminate the risk of him/her running across the road. Please do not park in the bus stop.
- State and Registered school students may be permitted to travel on a school bus service subject to the conditions set out in the Education Regulations, 1988. You should note that permission to travel on a school bus is a privilege, not a right. Permission may be withdrawn if a student's behaviour is unsatisfactory.

Non-compliance with the code of conduct set out below will result in the following actions:

- The bus driver will usually give the student a verbal warning, but if there is a serious safety issue, this step may be eliminated.
- The bus driver will at the end of the service, record the student's name and details of the offence.
- The students will be conveyed to their destination or other suitable location.
- The offence will be reported to the bus co-ordinator and/or the School Principal at the first opportunity.
- The School Principal may consult with the student, parent/carer, bus owner and if necessary the Department of Infrastructure, before deciding on an appropriate course of action. Penalties for inappropriate student behaviour may include:

- * A written official warning, or
- * Student's privilege to travel suspended for 1 or more school days; or
- * Student's privilege to travel suspended indefinitely. This may be imposed for persistent offenders and/or for serious breaches of the rules.

Other travel arrangements

- The bus driver has the authority to designate specific seats to students, and/or move a student to another specific seat on the bus.
- If any period of travel suspension occurs, it is the parent's/carer's responsibility to arrange the student's transport to and from school for the period of the suspension.
- In all cases of vandalism, those responsible or their parents/carers will be required to meet the costs of repairs.
- If a student misses a bus, the parent/carer will be responsible for making arrangements for transport to and from school.
- Any bus traveller not returning home by bus, or desiring to leave the bus at a stop other than his/her normal stop, must seek permission from the bus co-ordinator via a parent/carer note. Under no circumstance will a bus be delayed while messages are picked up or delivered.

1:WORD School Busse/instancode of Conduct.doc

CALENDAR 2020

	Week	MON	TUE	WED	THU	FRI	SAT	SUN
JAN	1	27	28 Staff start for 2020	29 Term 1 2020 Students start school	30	31	1	2
	2	3	4	5 NO Prep Students	6	7	8	9
FEBRUARY	3	10	11	12 NO Prep Students	13	14	15	16
	4	17	18	19 NO Prep Students	20	21	22	23
	5	24	25 School Photo Day	26 NO Prep Students	27	28	29	1
MARCH	6	2	3	4	5	6	7	8
	7	9 LABOUR DAY PUBLIC HOLIDAY	10	11	12	13	14	15
	8	16	17	18	19	20	21	22
	9	23	24	25	26	27 End of Term 1	28	29

2020 CALENDAR DATES

Term Dates 2020

Term 1 29th Jan - 27th Mar
 Term 2 14th Apr - 26th June
 Term 3 13th July - 18th Sept
 Term 4 5th Oct - 18th Dec

Public Holidays 2020

The following days are public holidays;

- The second Monday in March (Labour Day) March 9th
- Good Friday, Easter Sunday and Easter Monday April 10th, 12th & 13th
- Anzac Day Saturday April 25th

- The second Monday in June (Queen's Birthday) June 8th
- The first Tuesday in November (Melbourne Cup Day) November 3rd

School Photos

School Photos will be taken on *Tuesday 25th February*.

Cross Country

Tuesday 21st April

Athletic Sports

Tuesday 21st July